

Welcome Pack



# Welcome to Montague Park

September 2018

[www.myjourneywokingham.com](http://www.myjourneywokingham.com)



## About This Booklet

Welcome to your new home in Montague Park. This pack has been produced by the My Journey team to provide you with information about planning journeys from your new home.

My Journey Wokingham promotes travel which helps keep our residents healthy and safe and our borough cleaner and greener.

Within this pack you will find reference to local walking and cycle routes, information about local bus and rail services, details of how to access the Montague Park car club and where to find your nearest electric car charging points.

We are also pleased to be able to provide you with information on discounted travel and travel related items, some of which are exclusively for new residents of Montague Park.

## My Developer Details

---



---



---



---



---



---



---



---



---



---

## My Journey Wokingham

As well as welcoming new residents to the borough, My Journey Wokingham provides a series of travel related events and training courses.

For further information about the My Journey Wokingham programme please visit the My Journey Wokingham website.

Additionally, you can follow us on Facebook or Twitter to find out about our latest offers, events and training programmes.

Website:  
[www.myjourneywokingham.com](http://www.myjourneywokingham.com)

Facebook:  
[www.facebook.com/MJWokingham](http://www.facebook.com/MJWokingham)

Twitter:  
[@MJWokingham](https://twitter.com/MJWokingham)

## Feedback

We are always looking to improve the information provided in our welcome packs. If you have any comments about the pack or any questions around travel in Wokingham you can contact us.

Email:  
[myjourney@wokingham.gov.uk](mailto:myjourney@wokingham.gov.uk)





## Names of prominent men and women who lived in Wokingham have been used for streets across Montague Park

### Brief History

Wokingham Borough Council in collaboration with Wokingham Society have devised road names for the new Montague Park development.

#### Baker Crescent

Baker Crescent is named after Laura Jane Baker who arrived in Wokingham in 1890 as governess to the Butler family. Laura opened her first school in Milton Road later that year. The school grew and had to move sites several times. By 1939 the school site settled at The White House on Finchampstead Road. The school closed in 2010 but the site has opened again recently as Evendons Primary School.

#### William Heelas Way

William Heelas served as Alderman of Wokingham in 1832, 1839 and 1845. He was a wool-stapler who opened a drapers shop in Market Place which later extended into Rose Street and became a department store. The store 'Heelas' eventually moved to Reading, becoming the largest shop in Berkshire and was later purchased by the John Lewis Partnership.

#### Drew Crescent / Samborne Drive / Windsor Crescent

Drew Crescent is named after the Drew family who owned the Buckhurst Estate where Montague Park is located during the 15th Century. A descendent, Lawrence Drew of Seagry, served as a councillor to both Richard II and Henry IV and his son Thomas Drew conveyed the Manor to his daughter, Margaret and her husband Walter Samborne in 1453.

Walter and Margaret's son, Drew inherited the Manor of Buckhurst on his father's death in 1494. The Manor of Buckhurst passed direct from Drew to Walter's granddaughter Margaret Samborne when she was in her infancy following the death of her father. Margaret married the Second Lord of Windsor in 1536.

The Second Lord of Windsor was not related to the current Royal family. The name derives from Walter FitzOether, appointed castellan of Windsor Castle on its completion in 1086. Walter's descendants chose to call themselves 'de Windsor' because of this association. Walter's eleventh great grandson Sir William married Margaret Samborne in 1536 and became the Second Lord of Windsor on his father's death. The Manor of Buckhurst remained in the possession of the Windsor family for a further two generations.











## Walking is simple, free and one of the easiest ways to get more active, lose weight and become healthier

Cambridge University researchers have found that a brisk walk every day has substantial health benefits to people of all sizes.

Incorporating walking into your lifestyle will go a long way in helping your health and well-being.

The My Journey Wokingham website can be used to discover walking routes around the borough or to plan walks to your local shops, services and other amenities.

Visit: [www.myjourneywokingham.com/journey-planner](http://www.myjourneywokingham.com/journey-planner)

### Health Walks

There are a number of health walks that take place across the borough. The walks are a great way to meet new friends and keep active.

Visit: [www.wokingham.gov.uk/sports-and-activities-for-adults/walking-for-health](http://www.wokingham.gov.uk/sports-and-activities-for-adults/walking-for-health)

### Walk time to



Cycling is a low impact type of exercise which can help you lose weight, reduce stress and improve your fitness

It is often quicker to cycle than travel by car for local journeys in Wokingham, particularly during rush hour.

Cycling is one of the easiest ways to fit exercise into your daily routine. For example you could cycle to work or Wokingham Station a few days a week.

The cycle network in Wokingham Borough is continually being improved, with a new cycle route planned for the London Road.

Visit the My Journey website for the latest copy of the Wokingham Cycle Map, information on local bike events, training courses for adults and children at the Montague Park bikehub, as well as discounts at local retailers and much more.

Visit:

[www.myjourneywokingham.com/cycling](http://www.myjourneywokingham.com/cycling)

### Wokingham Bikeathon

The Bikeathon is one of our annual events that takes place around Wokingham every June. The date of the event will be shared on the My Journey website once it is announced.

### Cycle times to









WIGGLE  
Wickies

CHAMPIONSHIP

LEAGUE SCORES
...
...
...

BAD NEWS

...

...

...



## Forget about the parking costs and rising fuel prices and let someone else do the driving

The Lion 4/x4 bus service travels between Reading and Bracknell every 15 minutes. Buses towards Reading provide an excellent service to Wokingham Station and St Cripins, Holt, Forest, Emmbrook and Maiden Erlegh Schools.

Your nearest bus stops are the Plough Lane bus stops located on London Road, approximately a 5 minute walk from Montague Park.

For the most up to date timetable information scan the codes opposite or visit:  
[www.myjourneywokingham.com/discover-wokingham/bus-travel](http://www.myjourneywokingham.com/discover-wokingham/bus-travel)

Residents of Montague Park can try the bus for free. Please see the enclosed leaflet.

### Park and Ride to Reading

A park and ride service is now operating from the edge of Winnersh Triangle Business Park. The service provides buses into central Reading every 15 minutes. There are 400 car park spaces, two electric car charge points and a cycle shelter on the site.

For more information visit:  
[www.reading-travelinfo.co.uk/park-and-ride/winnersh-triangle](http://www.reading-travelinfo.co.uk/park-and-ride/winnersh-triangle)

### Live Bus Information

Download a free QR code reader on your smart phone and find out when your next 4/x4 bus is by scanning the QR codes below.

#### Buses travelling to Bracknell



London Road, adj 334  
Plough Lane

#### Buses travelling to Reading



London Road, opp  
Plough Lane

Rail travel is a faster, more relaxing and less stressful way to travel on business, and it's easy and hassle-free for leisure trips with your family and friends

Wokingham is the nearest railway station to Montague Park. You can walk or cycle there in less than 30 minutes. Alternatively you can catch the Lion 4/X4 bus which runs every 15 minutes, with direct journey times of less than 10 minutes from the London Road, Plough Lane stops.

Four trains an hour depart for Reading Station, two direct trains an hour to London Waterloo and two direct trains an hour to Guildford, Redhill and Gatwick Airport. Some additional services are provided at peak times.

The station is located on Station Approach, RG40 2AP. It has a café, 118 sheltered cycle storage spaces and 531 parking spaces.

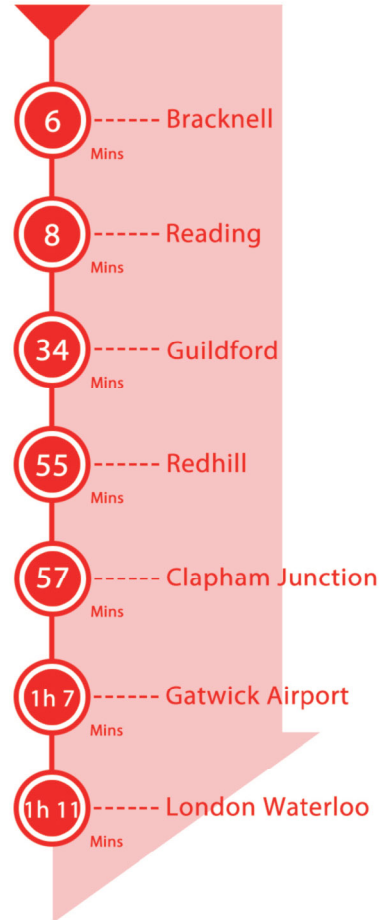
For further information on train times visit:

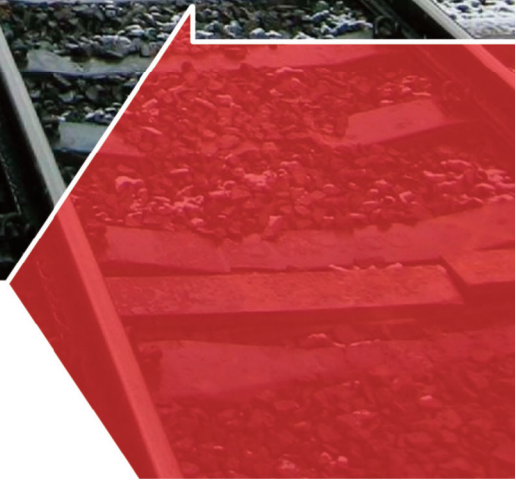
[www.nationalrail.co.uk](http://www.nationalrail.co.uk)

For information on tickets and discounted travel visit:

[www.myjourneywokingham.com/discover-wokingham/train-travel](http://www.myjourneywokingham.com/discover-wokingham/train-travel)

## Approximate Journey Times









We save 1560kg  
CO2 each year  
between us!

Arrange to travel together and share the costs, whilst reducing congestion and pollution at the same time

### Car Club

Montague Park includes a car club for those times when you need access to an extra vehicle, but don't want the expense and hassle of owning one. The vehicle is owned by Co-wheels, and located in the car park on William Heelas Way. To book the vehicle, you will need to pay a small annual fee and then the appropriate charge for the time you have it. Residents of Montague Park can claim £20 worth of free driving time by using the code "monty1".

To find out more information and register visit: [www.co-wheels.org.uk](http://www.co-wheels.org.uk)

### Car Share

Car sharing is a great way to reduce the costs of travelling by car. It is also a great way to meet new people and help the environment.

There is a public car share database available to search for other people looking to car share around your area.

Visit: [www.wokingham.liftshare.com](http://www.wokingham.liftshare.com)

### Smarter Driving

Smarter driving can help keep you safe and cost you less. Here are some tips for smarter driving:

- Check your tyres are at the correct pressure to help the car run more efficiently
- Remove unnecessary weight from your car like heavy equipment, roof racks or items in your boot
- Make sure your car is serviced regularly to ensure it is running as efficiently as possible
- Avoid wasteful fuel consumption with engine idling or air conditioning

### Wokingham Car Charge Points





[www.wokingham.gov.uk](http://www.wokingham.gov.uk)



[www.myjourneywokingham.com](http://www.myjourneywokingham.com)



[myjourney@wokingham.gov.uk](mailto:myjourney@wokingham.gov.uk)



[www.facebook.com/MJWokingham](https://www.facebook.com/MJWokingham)



@MJWokingham



(0118) 974 6000



Wokingham Borough Council  
Shute End  
Wokingham  
Berkshire RG40 1BN



**WOKINGHAM**  
BOROUGH COUNCIL



**BARRATT**  
HOMES

*Where quality lives*



**David Wilson Homes**