



Department
for Transport

Distributional Impacts: Air Quality

TAG Reference

TAG Unit A4.2 - Distributional Impacts

Version Control

Date	Description
Aug-14	Correction - noise replaced with air quality
Jan-14	Definitive release
17/10/2013	Release of restructured guidance

Contact

**Transport Appraisal and Strategic Modelling (TASM) Division
Department for Transport
Zone 2/25 Great Minster House
33 Horseferry Road
London
SW1P 4DR
tasm@dft.gsi.gov.uk
Tel 020 7944 6176
Fax 020 7944 2198**

Distributional Impacts: Air Quality

	IoD Income Domain					Total
	Most deprived ←————→ Least deprived					
	0-20%	20-40%	40-60%	60-80%	80-100%	
Number of properties with improved air quality [A]	0	0	3430	2525	54	6009
Number of properties with no change in air quality [B]	0	3	1027	882	2540	4452
Number of properties with worse air quality [C]	0	0	0	0	0	0
Number of net winners / losers [D] = [A] – [C]	0	0	3430	2525	54	6009
Total number of winners / losers across all groups [E] = $\sum[D]$						6009
Net winners/losers in each area as percentage of total [F] = $[D] / [E]$	0%	0%	57%	42%	1%	100%
Share of total population of study area	0%	2%	23%	28%	46%	100%
Assessment	-	✓	✓✓✓	✓✓✓	✓	Slight Beneficial

LSOA	Number of properties affected	IoD quintile	Assumed IoD quintile	Population
E01016355	8	60-80%		1836
E01016374	169	60-80%		1626
E01016378	1176	40-60%		2083
E01016379	175	60-80%		1750
E01016401	54	80-100%		1509
E01016404	403	40-60%		2050
E01016405	383	40-60%		2079
E01016406	209	40-60%		1602
E01016414	425	60-80%		1610
E01016416	638	60-80%		1637
E01016417	88	60-80%		1726
E01016613	1	40-60%		1534
E01033415	366	40-60%		1535
E01033417	598	60-80%		1095
E01033418	424	60-80%		1171
E01033420	255	40-60%		1130
E01033421	637	40-60%		1780

Note that some LSOA were not assigned IoD quintiles in the dataset, therefore an estimated value is provided (in red) based upon the IoD quintile of those around them

	Sum of properties affected	Share of the population
0-20%	0	0
20-40%	0	0
40-60%	3430	13793
60-80%	2525	12451
80-100%	54	1509

LSOA	Number of properties affected	IoD quintile	Assumed IoD quintile	Population
------	-------------------------------	--------------	----------------------	------------

Note that some LSOA were not assigned IoD quintiles in the dataset, therefore an estimated value is provided (in red) based upon the IoD quintile of those around them

	Sum of properties affected	Share of the population
0-20%	0	0
20-40%	0	0
40-60%	0	0
60-80%	0	0
80-100%	0	0

Note that some LSOA were not assigned loD quintiles in the dataset, therefore an estimated value is provided (in red) based upon the loD quintile of those around them

LSOA	Number of properties affected	loD quintile	Assumed loD quintile	Population	Correct Sum?		Sum of properties affected	Share of the population
E01033415	166	#N/A	40-60%	1535				
E01033420	49	#N/A	40-60%	1130				
E01016402	494	60-80%	60-80%	1911				
E01016403	137	80-100%	80-100%	1951				
E01016406	33	40-60%	40-60%	1602				
E01016613	457	40-60%	40-60%	1534				
E01016614	322	40-60%	40-60%	1385				
E01016615	3	20-40%	20-40%	1519				
E01016618	241							
		60-80%	60-80%	1283				
E01016619	244	80-100%	80-100%	1561		0-20%	0	0
E01016620	117	60-80%	60-80%	1481		20-40%	3	1519
E01016627	54	80-100%	80-100%	1845		40-60%	1027	7186
E01016656	30	60-80%	60-80%	1403		60-80%	882	6078
E01016661	7	80-100%	80-100%	1370		80-100%	2540	33324
E01016663	253	80-100%	80-100%	1537				
E01016666	8	80-100%	80-100%	1383				
E01016668	200	80-100%	80-100%	1587				
E01016669	406	80-100%	80-100%	1827				
E01016670	229	80-100%	80-100%	2058				
E01016672	12	80-100%	80-100%	1761				
E01016684	130	80-100%	80-100%	1598				
E01016685	315	80-100%	80-100%	1631				
E01016686	237	80-100%	80-100%	1139				
E01016688	67	80-100%	80-100%	1588				
E01016700	3	80-100%	80-100%	1890				
E01016701	166	80-100%	80-100%	1746				
E01016702	61	80-100%	80-100%	1828				
E01032761	5	80-100%	80-100%	2743				
E01032763	6	80-100%	80-100%	2281				

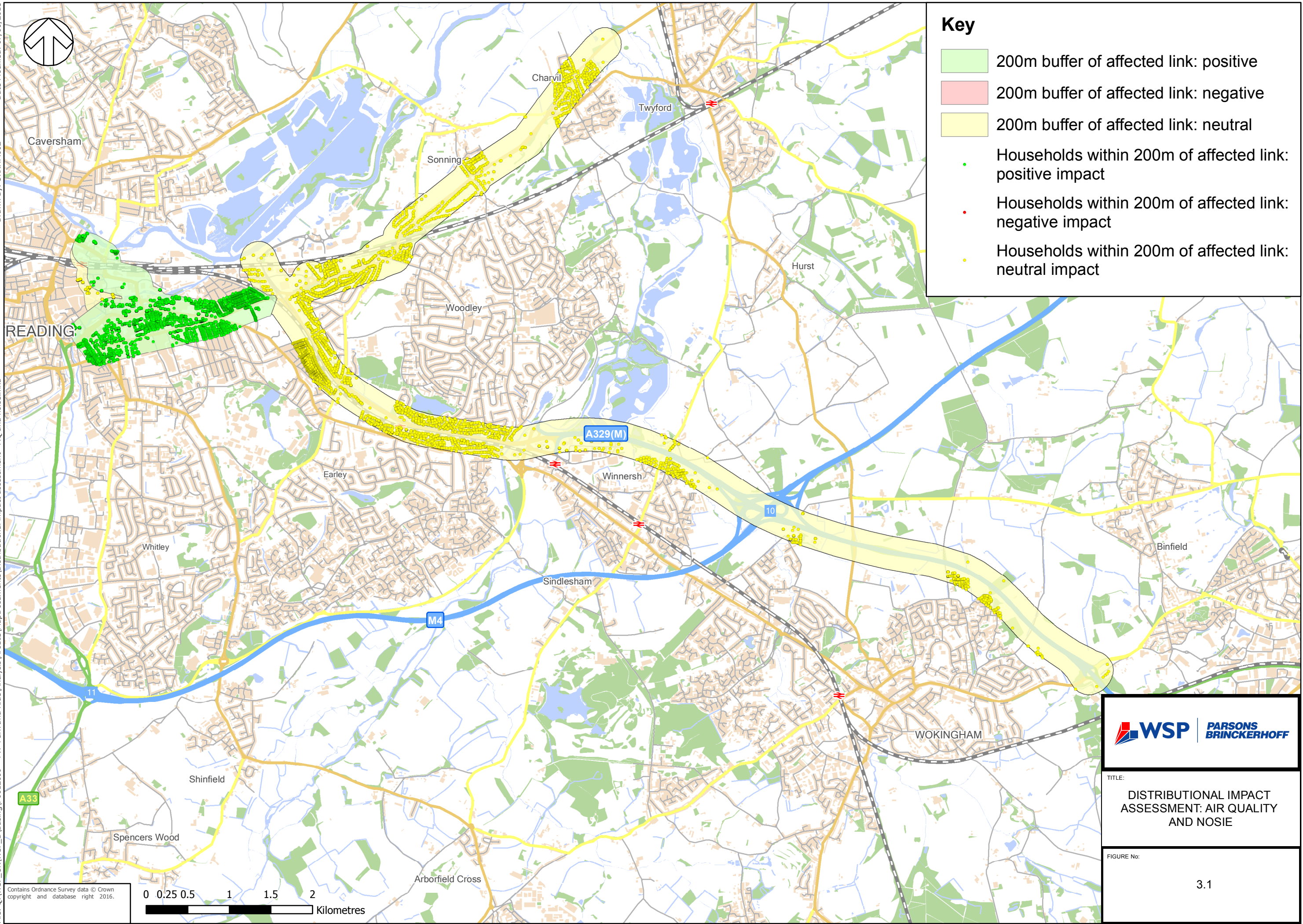
LSOA CODE	LA CODE	LA NAME	GOR CODE	GOR NAME	INCOME SCORE	RANK OF INCOME SCORE (where 1 is most deprived)	TOP...LEAST DEPRIVED	DEPRIVATION QUINTILE
E01016363	00MC	Reading	J	South East	0.3320912	2736	8.42%	0-20%
E01016443	00MC	Reading	J	South East	0.3034278	3602	11.09%	0-20%
E01016372	00MC	Reading	J	South East	0.3010215	3688	11.35%	0-20%
E01016368	00MC	Reading	J	South East	0.2999986	3722	11.46%	0-20%
E01016438	00MC	Reading	J	South East	0.2989128	3763	11.58%	0-20%
E01016441	00MC	Reading	J	South East	0.2965738	3850	11.85%	0-20%
E01016389	00MC	Reading	J	South East	0.2964675	3854	11.87%	0-20%
E01016394	00MC	Reading	J	South East	0.2809919	4455	13.72%	0-20%
E01016420	00MC	Reading	J	South East	0.2787715	4543	13.99%	0-20%
E01016415	00MC	Reading	J	South East	0.2615548	5252	16.17%	0-20%
E01016396	00MC	Reading	J	South East	0.2535815	5603	17.25%	0-20%
E01016397	00MC	Reading	J	South East	0.2509048	5721	17.61%	0-20%
E01016382	00MC	Reading	J	South East	0.2295289	6827	21.02%	20-40%
E01016373	00MC	Reading	J	South East	0.2167371	7551	23.25%	20-40%
E01016442	00MC	Reading	J	South East	0.2146631	7655	23.57%	20-40%
E01016377	00MC	Reading	J	South East	0.2093204	7923	24.39%	20-40%
E01016391	00MC	Reading	J	South East	0.2050976	8176	25.17%	20-40%
E01016423	00MC	Reading	J	South East	0.2002324	8490	26.14%	20-40%
E01016381	00MC	Reading	J	South East	0.1906135	9093	27.99%	20-40%
E01016375	00MC	Reading	J	South East	0.1866237	9371	28.85%	20-40%
E01016422	00MC	Reading	J	South East	0.1808444	9802	30.18%	20-40%
E01016352	00MC	Reading	J	South East	0.1805249	9821	30.24%	20-40%
E01016440	00MC	Reading	J	South East	0.1777477	10038	30.90%	20-40%
E01016359	00MC	Reading	J	South East	0.1684857	10698	32.94%	20-40%
E01016353	00MC	Reading	J	South East	0.1658919	10876	33.48%	20-40%
E01016358	00MC	Reading	J	South East	0.1565472	11641	35.84%	20-40%
E01016361	00MC	Reading	J	South East	0.1545288	11807	36.35%	20-40%
E01016437	00MC	Reading	J	South East	0.1528408	11971	36.85%	20-40%
E01016400	00MC	Reading	J	South East	0.1516464	12073	37.17%	20-40%
E01016435	00MC	Reading	J	South East	0.1482569	12370	38.08%	20-40%
E01016356	00MC	Reading	J	South East	0.148246	12371	38.09%	20-40%
E01016439	00MC	Reading	J	South East	0.1463156	12548	38.63%	20-40%
E01016369	00MC	Reading	J	South East	0.1417054	13005	40.04%	40-60%
E01016360	00MC	Reading	J	South East	0.138326	13340	41.07%	40-60%
E01016395	00MC	Reading	J	South East	0.1364325	13539	41.68%	40-60%
E01016354	00MC	Reading	J	South East	0.1339507	13784	42.44%	40-60%
E01016405	00MC	Reading	J	South East	0.1329186	13878	42.73%	40-60%
E01016366	00MC	Reading	J	South East	0.1242693	14777	45.49%	40-60%
E01016367	00MC	Reading	J	South East	0.1236356	14846	45.71%	40-60%
E01016404	00MC	Reading	J	South East	0.122224	15001	46.18%	40-60%
E01016378	00MC	Reading	J	South East	0.1215553	15069	46.39%	40-60%
E01016434	00MC	Reading	J	South East	0.1193714	15314	47.15%	40-60%
E01016436	00MC	Reading	J	South East	0.1178929	15485	47.67%	40-60%
E01016421	00MC	Reading	J	South East	0.1157303	15724	48.41%	40-60%
E01016419	00MC	Reading	J	South East	0.113492	15998	49.25%	40-60%
E01016392	00MC	Reading	J	South East	0.1109412	16308	50.21%	40-60%
E01016433	00MC	Reading	J	South East	0.110287	16377	50.42%	40-60%
E01016362	00MC	Reading	J	South East	0.1085059	16605	51.12%	40-60%
E01016390	00MC	Reading	J	South East	0.1069102	16808	51.75%	40-60%
E01016406	00MC	Reading	J	South East	0.1063131	16875	51.95%	40-60%
E01016409	00MC	Reading	J	South East	0.1030721	17325	53.34%	40-60%
E01016385	00MC	Reading	J	South East	0.0993701	17809	54.83%	40-60%
E01016398	00MC	Reading	J	South East	0.0989687	17872	55.02%	40-60%
E01016371	00MC	Reading	J	South East	0.0981757	17983	55.36%	40-60%
E01016351	00MC	Reading	J	South East	0.0975889	18046	55.56%	40-60%
E01016428	00MC	Reading	J	South East	0.0963843	18227	56.11%	40-60%
E01016388	00MC	Reading	J	South East	0.0897413	19235	59.22%	40-60%
E01016357	00MC	Reading	J	South East	0.0872513	19635	60.45%	60-80%
E01016376	00MC	Reading	J	South East	0.08593	19835	61.06%	60-80%
E01016383	00MC	Reading	J	South East	0.0830413	20362	62.69%	60-80%
E01016374	00MC	Reading	J	South East	0.0774931	21352	65.73%	60-80%
E01016355	00MC	Reading	J	South East	0.0768841	21468	66.09%	60-80%
E01016416	00MC	Reading	J	South East	0.0745882	21941	67.55%	60-80%
E01016393	00MC	Reading	J	South East	0.0736184	22128	68.12%	60-80%
E01016380	00MC	Reading	J	South East	0.0726164	22305	68.67%	60-80%
E01016417	00MC	Reading	J	South East	0.0719431	22434	69.07%	60-80%
E01016365	00MC	Reading	J	South East	0.068758	23060	70.99%	60-80%
E01016402	00MC	Reading	J	South East	0.068282	23143	71.25%	60-80%
E01016414	00MC	Reading	J	South East	0.0677278	23245	71.56%	60-80%
E01016379	00MC	Reading	J	South East	0.0675165	23295	71.72%	60-80%
E01016399	00MC	Reading	J	South East	0.0659688	23607	72.68%	60-80%
E01016432	00MC	Reading	J	South East	0.0647228	23876	73.51%	60-80%
E01016384	00MC	Reading	J	South East	0.0634028	24151	74.35%	60-80%
E01016431	00MC	Reading	J	South East	0.0630699	24219	74.56%	60-80%
E01016418	00MC	Reading	J	South East	0.0592933	25064	77.16%	60-80%
E01016412	00MC	Reading	J	South East	0.0589685	25143	77.41%	60-80%
E01016401	00MC	Reading	J	South East	0.0541783	26161	80.54%	80-100%
E01016408	00MC	Reading	J	South East	0.0539619	26204	80.67%	80-100%
E01016407	00MC	Reading	J	South East	0.0536944	26282	80.91%	80-100%
E01016410	00MC	Reading	J	South East	0.0460991	27913	85.93%	80-100%
E01016403	00MC	Reading	J	South East	0.0435556	28472	87.65%	80-100%
E01016424	00MC	Reading	J	South East	0.0428258	28606	88.07%	80-100%
E01016411	00MC	Reading	J	South East	0.0374252	29669	91.34%	80-100%

E01016427	00MC	Reading	J	South East	0.0351554	30115	92.71%	80-100%
E01016429	00MC	Reading	J	South East	0.0344856	30226	93.05%	80-100%
E01016387	00MC	Reading	J	South East	0.0304399	30894	95.11%	80-100%
E01016364	00MC	Reading	J	South East	0.0279425	31246	96.19%	80-100%
E01016370	00MC	Reading	J	South East	0.0272818	31336	96.47%	80-100%
E01016425	00MC	Reading	J	South East	0.026101	31458	96.85%	80-100%
E01016386	00MC	Reading	J	South East	0.0198754	32022	98.58%	80-100%
E01016413	00MC	Reading	J	South East	0.0191663	32079	98.76%	80-100%
E01016426	00MC	Reading	J	South East	0.0177369	32165	99.02%	80-100%
E01016430	00MC	Reading	J	South East	0.0101395	32438	99.86%	80-100%
E01016673	00MF	Wokingham	J	South East	0.1983643	8611	26.51%	20-40%
E01016642	00MF	Wokingham	J	South East	0.1579798	11527	35.49%	20-40%
E01016662	00MF	Wokingham	J	South East	0.1559653	11679	35.96%	20-40%
E01016704	00MF	Wokingham	J	South East	0.1495212	12254	37.73%	20-40%
E01016674	00MF	Wokingham	J	South East	0.1463773	12541	38.61%	20-40%
E01016615	00MF	Wokingham	J	South East	0.1424931	12939	39.83%	20-40%
E01016680	00MF	Wokingham	J	South East	0.1301159	14162	43.60%	40-60%
E01016705	00MF	Wokingham	J	South East	0.1116926		49.96%	40-60%
E01016613	00MF	Wokingham	J	South East	0.1092268	16501	50.80%	40-60%
E01016679	00MF	Wokingham	J	South East	0.1009461	17601	54.19%	40-60%
E01016614	00MF	Wokingham	J	South East	0.1003367	17678	54.42%	40-60%
E01016678	00MF	Wokingham	J	South East	0.081465	20619	63.48%	60-80%
E01016690	00MF	Wokingham	J	South East	0.0786138	21123	65.03%	60-80%
E01016631	00MF	Wokingham	J	South East	0.0779642	21259	65.45%	60-80%
E01016681	00MF	Wokingham	J	South East	0.0743242	21996	67.72%	60-80%
E01016696	00MF	Wokingham	J	South East	0.0735333	22145	68.18%	60-80%
E01016626	00MF	Wokingham	J	South East	0.071568	22520	69.33%	60-80%
E01016616	00MF	Wokingham	J	South East	0.0705729	22706	69.90%	60-80%
E01016677	00MF	Wokingham	J	South East	0.0705443	22714	69.93%	60-80%
E01016618	00MF	Wokingham	J	South East	0.0688328	23039	70.93%	60-80%
E01016647	00MF	Wokingham	J	South East	0.0654978	23706	72.98%	60-80%
E01016692	00MF	Wokingham	J	South East	0.0637248	24076	74.12%	60-80%
E01016698	00MF	Wokingham	J	South East	0.0633449	24168	74.40%	60-80%
E01016671	00MF	Wokingham	J	South East	0.0624439	24335	74.92%	60-80%
E01016659	00MF	Wokingham	J	South East	0.0614223	24551	75.58%	60-80%
E01016656	00MF	Wokingham	J	South East	0.0611334	24623	75.81%	60-80%
E01016703	00MF	Wokingham	J	South East	0.0591327	25104	77.29%	60-80%
E01016620	00MF	Wokingham	J	South East	0.05898	25140	77.40%	60-80%
E01016621	00MF	Wokingham	J	South East	0.0568115	25590	78.78%	60-80%
E01016687	00MF	Wokingham	J	South East	0.0537115	26279	80.90%	80-100%
E01016669	00MF	Wokingham	J	South East	0.0532635	26358	81.15%	80-100%
E01016639	00MF	Wokingham	J	South East	0.0504454	26962	83.01%	80-100%
E01016686	00MF	Wokingham	J	South East	0.0494357	27192	83.71%	80-100%
E01016668	00MF	Wokingham	J	South East	0.0464963	27842	85.72%	80-100%
E01016617	00MF	Wokingham	J	South East	0.0457566	27980	86.14%	80-100%
E01016694	00MF	Wokingham	J	South East	0.045192	28124	86.58%	80-100%
E01016661	00MF	Wokingham	J	South East	0.0448091	28220	86.88%	80-100%
E01016675	00MF	Wokingham	J	South East	0.0446234	28257	86.99%	80-100%
E01016651	00MF	Wokingham	J	South East	0.0441311	28366	87.33%	80-100%
E01016701	00MF	Wokingham	J	South East	0.0433649	28504	87.75%	80-100%
E01016623	00MF	Wokingham	J	South East	0.0421035	28771	88.58%	80-100%
E01016663	00MF	Wokingham	J	South East	0.0409742	29012	89.32%	80-100%
E01016650	00MF	Wokingham	J	South East	0.040848	29038	89.40%	80-100%
E01016641	00MF	Wokingham	J	South East	0.0399709	29220	89.96%	80-100%
E01016691	00MF	Wokingham	J	South East	0.0398998	29229	89.99%	80-100%
E01016702	00MF	Wokingham	J	South East	0.0391941	29357	90.38%	80-100%
E01016610	00MF	Wokingham	J	South East	0.0391257	29365	90.40%	80-100%
E01016682	00MF	Wokingham	J	South East	0.0378326	29586	91.08%	80-100%
E01016640	00MF	Wokingham	J	South East	0.0377694	29604	91.14%	80-100%
E01016699	00MF	Wokingham	J	South East	0.0358945	29975	92.28%	80-100%
E01016627	00MF	Wokingham	J	South East	0.0358922	29976	92.28%	80-100%
E01016625	00MF	Wokingham	J	South East	0.0343115	30250	93.13%	80-100%
E01016683	00MF	Wokingham	J	South East	0.033892	30309	93.31%	80-100%
E01016665	00MF	Wokingham	J	South East	0.0332597	30422	93.66%	80-100%
E01016684	00MF	Wokingham	J	South East	0.0331932	30436	93.70%	80-100%
E01016652	00MF	Wokingham	J	South East	0.0327092	30525	93.98%	80-100%
E01016634	00MF	Wokingham	J	South East	0.0324501	30567	94.10%	80-100%
E01016689	00MF	Wokingham	J	South East	0.0320567	30631	94.30%	80-100%
E01016660	00MF	Wokingham	J	South East	0.0319777	30643	94.34%	80-100%
E01016664	00MF	Wokingham	J	South East	0.0315463	30727	94.60%	80-100%
E01016685	00MF	Wokingham	J	South East	0.0312666	30781	94.76%	80-100%
E01016630	00MF	Wokingham	J	South East	0.0312475	30786	94.78%	80-100%
E01016707	00MF	Wokingham	J	South East	0.0307181	30857	95.00%	80-100%
E01016624	00MF	Wokingham	J	South East	0.0304142	30900	95.13%	80-100%
E01016649	00MF	Wokingham	J	South East	0.0286462	31157	95.92%	80-100%
E01016645	00MF	Wokingham	J	South East	0.0278503	31258	96.23%	80-100%
E01016654	00MF	Wokingham	J	South East	0.0270489	31369	96.57%	80-100%
E01016648	00MF	Wokingham	J	South East	0.0261533	31454	96.84%	80-100%
E01016697	00MF	Wokingham	J	South East	0.0259616	31473	96.89%	80-100%
E01016628	00MF	Wokingham	J	South East	0.0246241	31623	97.36%	80-100%
E01016666	00MF	Wokingham	J	South East	0.0239142	31693	97.57%	80-100%
E01016695	00MF	Wokingham	J	South East	0.0238071	31702	97.60%	80-100%
E01016653	00MF	Wokingham	J	South East	0.0232697	31750	97.75%	80-100%
E01016676	00MF	Wokingham	J	South East	0.0231442	31762	97.78%	80-100%
E01016700	00MF	Wokingham	J	South East	0.0218192	31887	98.17%	80-100%
E01016611	00MF	Wokingham	J	South East	0.0205543	31972	98.43%	80-100%
E01016646	00MF	Wokingham	J	South East	0.020457	31980	98.45%	80-100%

E01016658	00MF	Wokingham	J	South East	0.0200123	32005	98.53%	80-100%
E01016612	00MF	Wokingham	J	South East	0.019593	32043	98.65%	80-100%
E01016622	00MF	Wokingham	J	South East	0.0194965	32053	98.68%	80-100%
E01016635	00MF	Wokingham	J	South East	0.0192785	32071	98.73%	80-100%
E01016672	00MF	Wokingham	J	South East	0.0189123	32098	98.82%	80-100%
E01016688	00MF	Wokingham	J	South East	0.0188622	32102	98.83%	80-100%
E01016632	00MF	Wokingham	J	South East	0.0188161	32106	98.84%	80-100%
E01016644	00MF	Wokingham	J	South East	0.0187908	32110	98.85%	80-100%
E01016670	00MF	Wokingham	J	South East	0.0185008	32123	98.89%	80-100%
E01016638	00MF	Wokingham	J	South East	0.0184453	32129	98.91%	80-100%
E01016637	00MF	Wokingham	J	South East	0.0173579	32192	99.11%	80-100%
E01016709	00MF	Wokingham	J	South East	0.016909	32227	99.21%	80-100%
E01016657	00MF	Wokingham	J	South East	0.0167703	32234	99.24%	80-100%
E01016619	00MF	Wokingham	J	South East	0.0165679	32244	99.27%	80-100%
E01016643	00MF	Wokingham	J	South East	0.016075	32270	99.35%	80-100%
E01016708	00MF	Wokingham	J	South East	0.0143619	32342	99.57%	80-100%
E01016655	00MF	Wokingham	J	South East	0.0129825	32385	99.70%	80-100%
E01016706	00MF	Wokingham	J	South East	0.0120047	32402	99.75%	80-100%
E01016633	00MF	Wokingham	J	South East	0.0109832	32425	99.82%	80-100%
E01016636	00MF	Wokingham	J	South East	0.0090032	32451	99.90%	80-100%
E01016693	00MF	Wokingham	J	South East	0.0086781	32456	99.92%	80-100%
E01016629	00MF	Wokingham	J	South East	0.0079138	32465	99.95%	80-100%
E01016667	00MF	Wokingham	J	South East	0.0061339	32474	99.98%	80-100%

LSOA	Quintile	Total_population	Included in Analysis?	Total Population	IoD Quintile		Total Population affected	Share of the population
						0-20%	0	0.00%
E01016364	80-100%	1414	E01016402	1911	60-80%	20-40%	1519	2.34%
E01016362	40-60%	1514	E01016403	1951	80-100%	40-60%	15178	23.34%
E01016363	0-20%	1860	E01016614	1385	40-60%	60-80%	18529	28.49%
E01016365	60-80%	1585	E01016615	1519	20-40%	80-100%	29809	45.84%
E01016366	40-60%	1582	E01016618	1283	60-80%	Total	65035	
E01016367	40-60%	1578	E01016619	1561	80-100%			
E01016355	60-80%	1836	E01016620	1481	60-80%			
E01016402	60-80%	1911	E01016627	1845	80-100%			
E01016404	40-60%	2050	E01016656	1403	60-80%			
E01016405	40-60%	2079	E01016661	1370	80-100%			
E01016406	40-60%	1602	E01016663	1537	80-100%			
E01033417	60-80%	1095	E01016666	1383	80-100%			
E01033421	40-60%	1780	E01016668	1587	80-100%			
E01016353	20-40%	1797	E01016669	1827	80-100%			
E01016378	40-60%	2083	E01016670	2058	80-100%			
E01016391	20-40%	1835	E01016672	1761	80-100%			
E01033415	40-60%	1535	E01016684	1598	80-100%			
E01033418	60-80%	1171	E01016685	1631	80-100%			
E01033420	40-60%	1130	E01016686	1139	80-100%			
E01033422	#N/A	1117	E01016688	1588	80-100%			
E01033423	#N/A	1168	E01016700	1890	80-100%			
E01016401	80-100%	1509	E01016701	1746	80-100%			
E01016403	80-100%	1951	E01016702	1828	80-100%			
E01016416	60-80%	1637	E01032761	2743	0			
E01016417	60-80%	1726	E01032763	2281	0			
E01016418	60-80%	1640	E01016355	1836	60-80%			
E01016388	40-60%	1435	E01016374	1626	60-80%			
E01016390	40-60%	1540	E01016378	2083	40-60%			
E01016374	60-80%	1626	E01016379	1750	60-80%			
E01016375	20-40%	1258	E01016401	1509	80-100%			
E01016376	60-80%	1535	E01016404	2050	40-60%			
E01016379	60-80%	1750	E01016405	2079	40-60%			
E01016413	80-100%	1764	E01016406	1602	40-60%			
E01016414	60-80%	1610	E01016414	1610	60-80%			
E01016370	80-100%	3093	E01016416	1637	60-80%			
E01016415	0-20%	1611	E01016417	1726	60-80%			
E01016377	20-40%	1641	E01016613	1534	40-60%			
E01016678	60-80%	1364	E01033417	1095	60-80%			
E01016619	80-100%	1561	E01033418	1171	60-80%			
E01016620	60-80%	1481	E01033421	1780	40-60%			
E01016694	80-100%	1454	E01033415	1535	40-60%			
E01016695	80-100%	1549	E01033420	1130	40-60%			
E01016623	80-100%	1489						
E01016624	80-100%	1438						
E01016684	80-100%	1598						
E01016685	80-100%	1631						
E01016622	80-100%	1249						

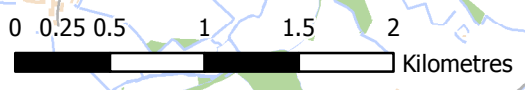
E01016660	80-100%	1627
E01016615	20-40%	1519
E01016616	60-80%	1489
E01016617	80-100%	1242
E01016662	20-40%	1724
E01016613	40-60%	1534
E01016614	40-60%	1385
E01016618	60-80%	1283
E01016664	80-100%	1274
E01016668	80-100%	1587
E01016669	80-100%	1827
E01016661	80-100%	1370
E01016663	80-100%	1537
E01016686	80-100%	1139
E01016687	80-100%	1279
E01016688	80-100%	1588
E01016689	80-100%	1418
E01016652	80-100%	1276
E01016665	80-100%	1592
E01016666	80-100%	1383
E01032761	0	2743
E01016647	60-80%	1921
E01016701	80-100%	1746
E01016702	80-100%	1828
E01016703	60-80%	1926
E01016704	20-40%	2017
E01016627	80-100%	1845
E01016628	80-100%	1534
E01016656	60-80%	1403
E01016700	80-100%	1890
E01016644	80-100%	1465
E01016645	80-100%	1539
E01016671	60-80%	1700
E01016673	20-40%	1724
E01016674	20-40%	1410
E01016670	80-100%	2058
E01016672	80-100%	1761
E01032763	0	2281



Key

- 200m buffer of affected link: positive
- 200m buffer of affected link: negative
- 200m buffer of affected link: neutral
- Households within 200m of affected link: positive impact
- Households within 200m of affected link: negative impact
- Households within 200m of affected link: neutral impact

Contains Ordnance Survey data © Crown copyright and database right 2016.



TITLE:
**DISTRIBUTIONAL IMPACT
 ASSESSMENT: AIR QUALITY
 AND NOSIE**

FIGURE No:
 3.1